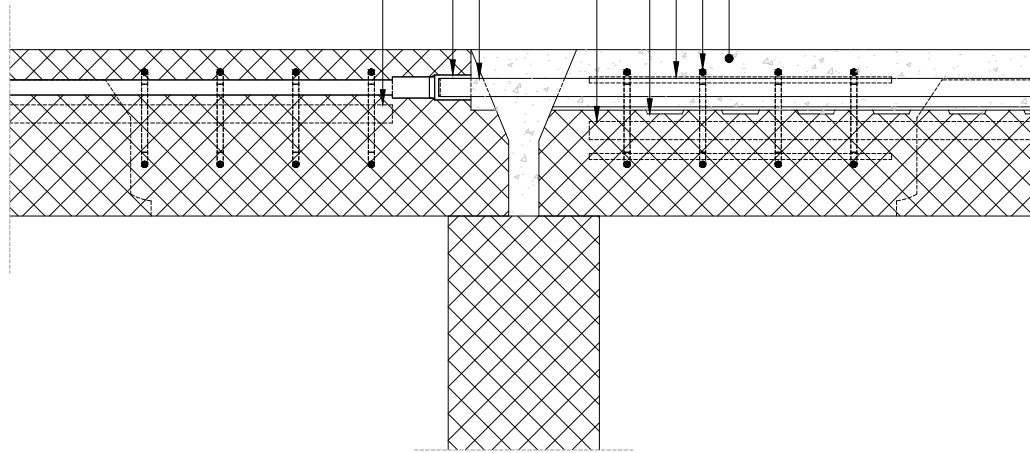


Detail - Longitudinal section

1:10

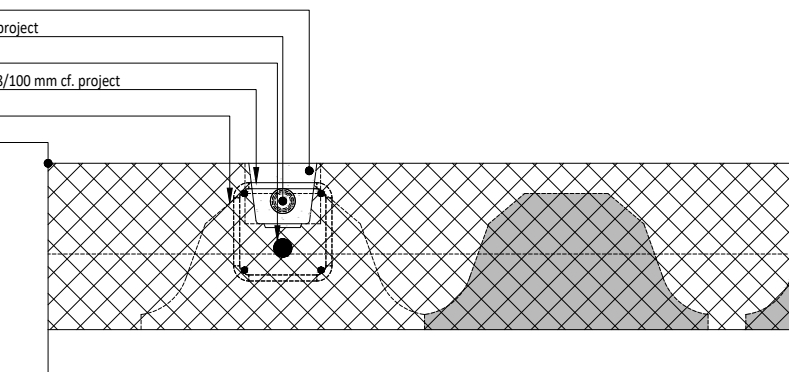
- Cast-in-place, min. $f_{tk} = 35$ MPa
- Cast-in extruding vertical closed bars K8/100 mm cf. project
- Cast-in horizontal K8 cf. project
- Indented recess surface for shear transfer over joint
- Cast-in edge reinforcement cf. project, anchored to rebar coupler through lapping of bars
- Threaded rod/rebar coupler (male) cf. project
- Cast-in rebar coupler (female) cf. project
- Cast-in edge reinforcement cf. project anchored with laps



Detail - Cross section

1:10

- Anchoring recess is grouted on-site
- Threaded rod/rebar coupler (male) cf. project
- Cast-in edge reinforcement cf. project
- Cast-in extruding vertical closed bars K8/100 mm cf. project
- Cast-in LAC blocks omitted locally
- Straight side along facade possible



Detail - Seen from above

1:10

- SL-deck with anchoring recess
- Joint between SL-decks
- SL-deck with cast-in rebar coupler (female) cf. project
- Rebar coupler

