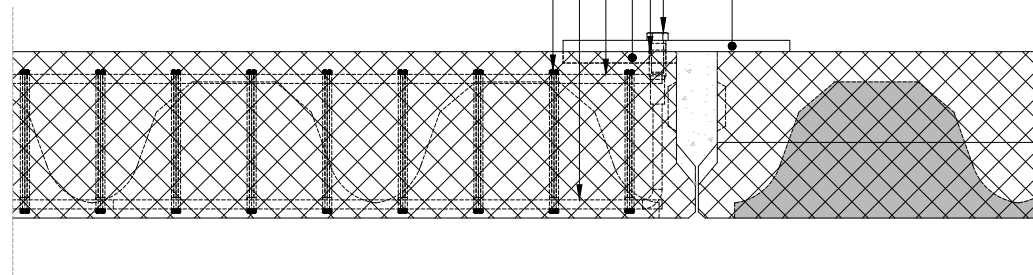


Detail - Longitudinal section

1:10

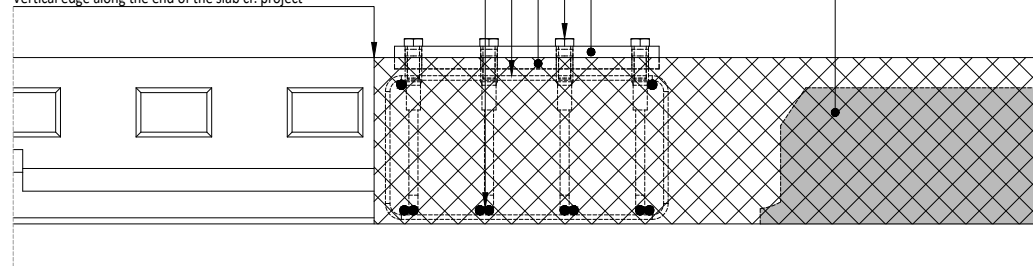
- Support plate 15 mm, bolted to cast-in vertical rebar couplers in supported slab via cast-in plate cf. project
- Bolts cf. project. (min. bolt class 8.8)
- Cast-in rebar couplers cf. project
- Cast-in plate 15 mm cf. project
- Cast-in horizontal K12 cf. project
- Vertical closed bars K6/100 mm cf. project



Detail - Cross section

1:10

- Cast-in LAC blocks
- Support plate 15 mm cf. project
- Bolted connection between support plate and cast-in rebar couplers cf. project
- Cast-in plate 15 mm cf. project
- Vertical closed bars K6/100 mm cf. project
- Rebar couplers anchored through laps with horizontal K12 cf. project
- Vertical edge along the end of the slab cf. project



Detail - Seen from above

1:10

- SL-deck support by hangers
- Cast-in transverse beam transfers load to hangers
- Support plate 15 mm cf. project
- Supporting SL-deck

