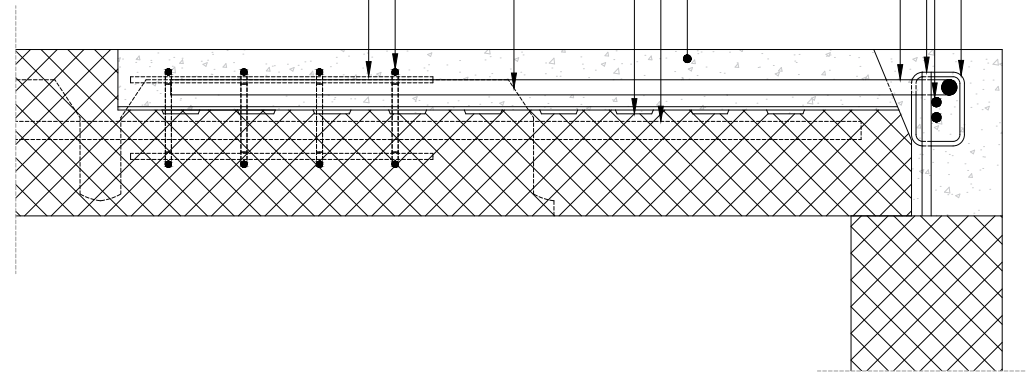


**Detail - Longitudinal section**

1:10

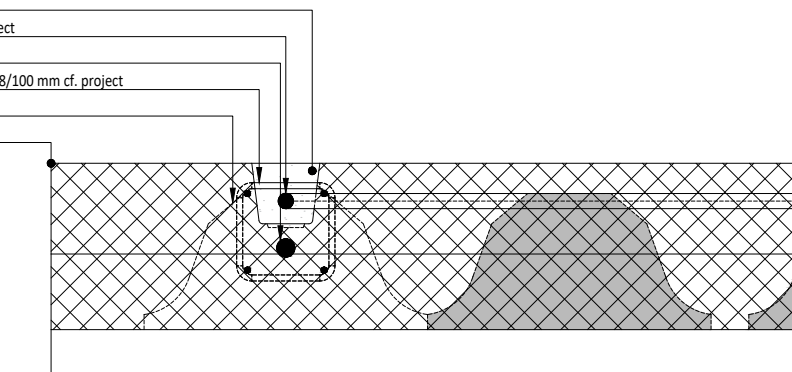
- Closed bars along lap length cf. project
- Joint reinforcement cf. project. Anchored with laps to cast-in edge reinforcement in slab
- Extruding reinforcement from wall cf. project
- Bent anchorage reinforcement cf. project. Anchored with laps to joint reinforcement and to cast-in edge reinforcement in slab
- Cast-in-place, min.  $f_{ck} = 35$  MPa
- Cast-in edge reinforcement cf. project anchored with laps
- Indented recess surface for shear transfer over joint
- Cast-in LAC blocks omitted locally
- Cast-in extruding vertical closed bars K8/100 mm cf. project
- Cast-in horizontal K8 cf. project



**Detail - Cross section**

1:10

- Anchoring recess is grouted on-site
- Bent anchorage reinforcement cf. project
- Cast-in edge reinforcement cf. project
- Cast-in extruding vertical closed bars K8/100 mm cf. project
- Cast-in LAC blocks omitted locally
- Straight side along facade possible



**Detail - Seen from above**

1:10

- SL-deck with anchoring recess
- Joint between wall and SL-deck
- Bent reinforcement anchored with laps inside closed bars

